



OCEAN  
— GROUP ASIA —







## SURIN SANDS

Surin Sands is an attractive and sensational suite boutique condominium, nestled in a lush tropical environment just a short walking distance to two of Phuket's most spectacular beaches where you can bury your toes in the sand as you bask in the warmth of the sunlight and take in the fresh ocean air. Relax in our contemporary rooms designed to welcome you with island leisure and elegance, ideal for any frequent traveler seeking convenience and opulence.

Surin Sands brings an upscale, yet unpretentious getaway to life; make memories of your own as you embrace the tropical tranquility that flows throughout our intimate oasis.

Let your senses ignite; relax and enjoy your well deserved stay in tropical paradise.



OCEAN  
— GROUP ASIA —





## ❧ FACILITIES ❧

- ROOFTOP INFINITY EDGE POOL
- FULLY EQUIPPED GYM / FITNESS ROOM
- SMART CARD ACCESS & CCTV THROUGHOUT
- RECEPTION / LOBBY AREA
- COVERED CARPARK WITH FULL SECURITY
- FULLY SERVICED ROOFTOP RESTAURANT / BAR









 GROUND FLOOR PLAN



 2<sup>ND</sup> FLOOR PLAN

A	30 SQM.
B	38 SQM.
C	40 SQM.
D	51 SQM.
E	78 SQM.



 3<sup>RD</sup> FLOOR PLAN



 4<sup>TH</sup> FLOOR PLAN

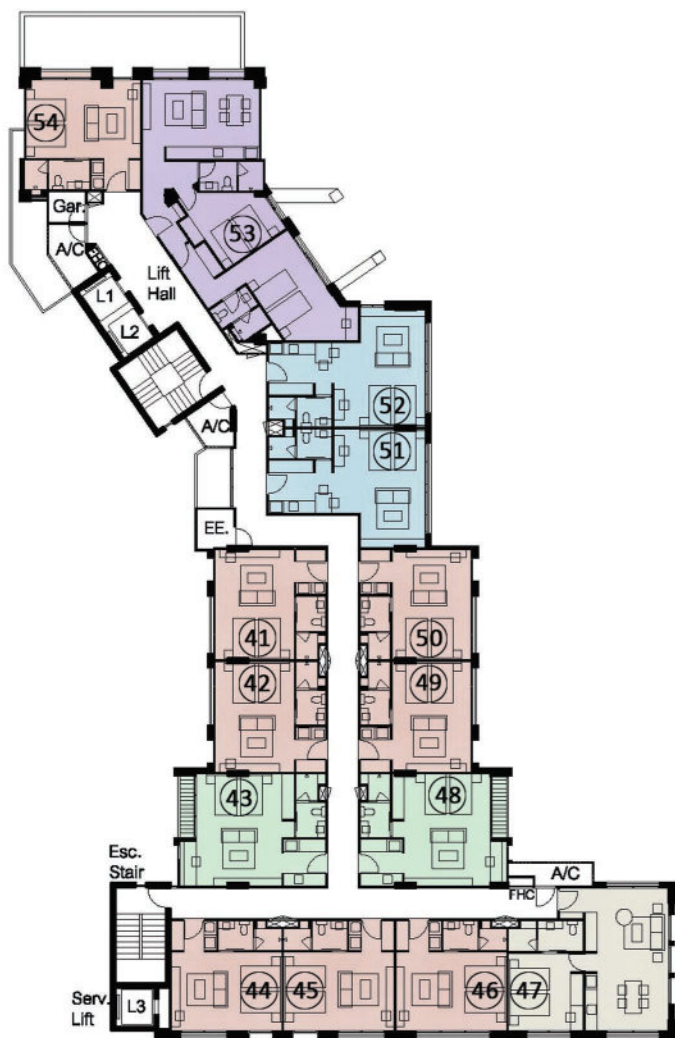


- |   |         |
|---|---------|
| A | 30 SQM. |
| B | 38 SQM. |
| C | 40 SQM. |
| D | 51 SQM. |
| E | 78 SQM. |



OCEAN  
— GROUP ASIA —



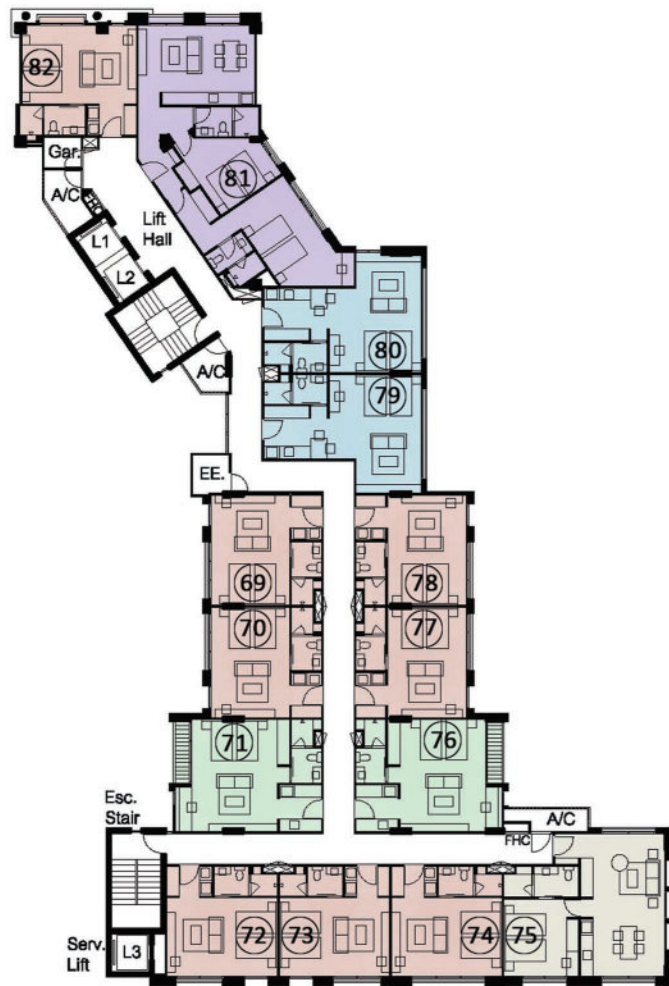


 5<sup>TH</sup> FLOOR PLAN

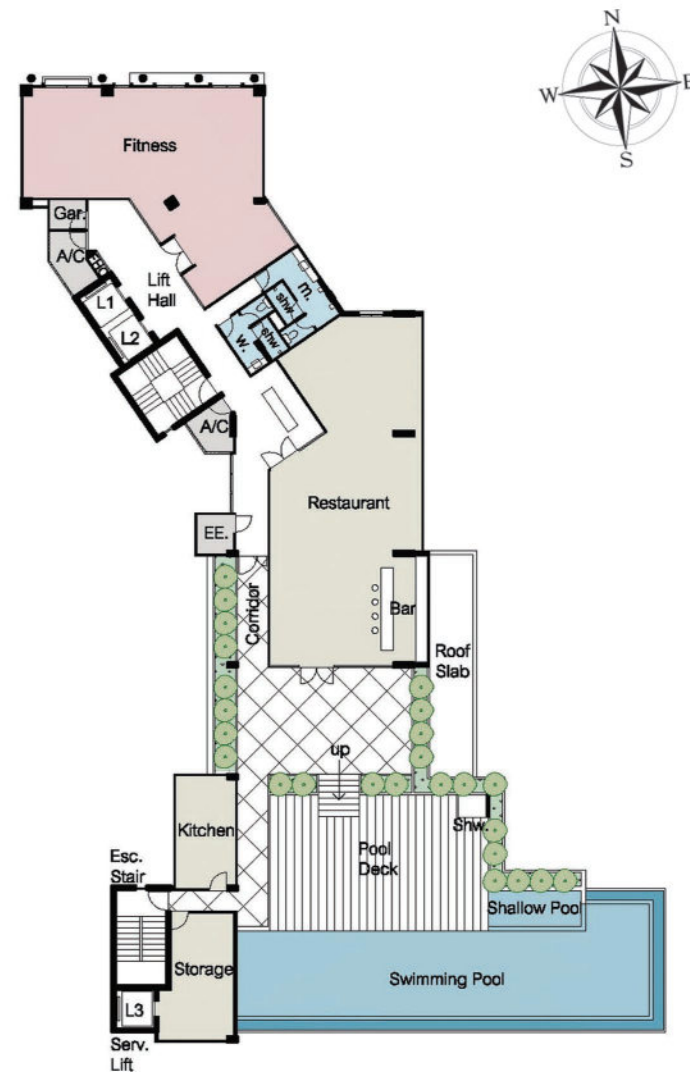


 6<sup>TH</sup> FLOOR PLAN

- |   |         |
|---|---------|
| A | 30 SQM. |
| B | 38 SQM. |
| C | 40 SQM. |
| D | 51 SQM. |
| E | 78 SQM. |



 7<sup>TH</sup> FLOOR PLAN



 ROOFTOP FLOOR PLAN

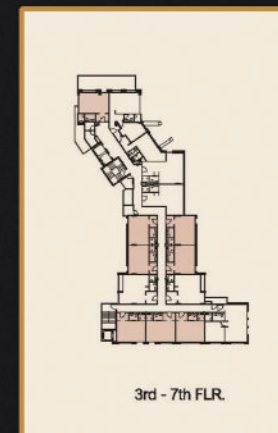
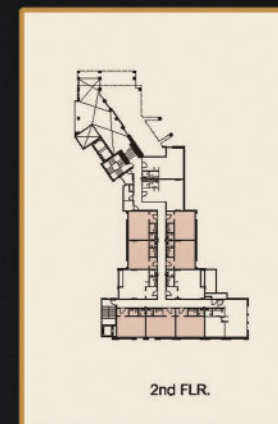
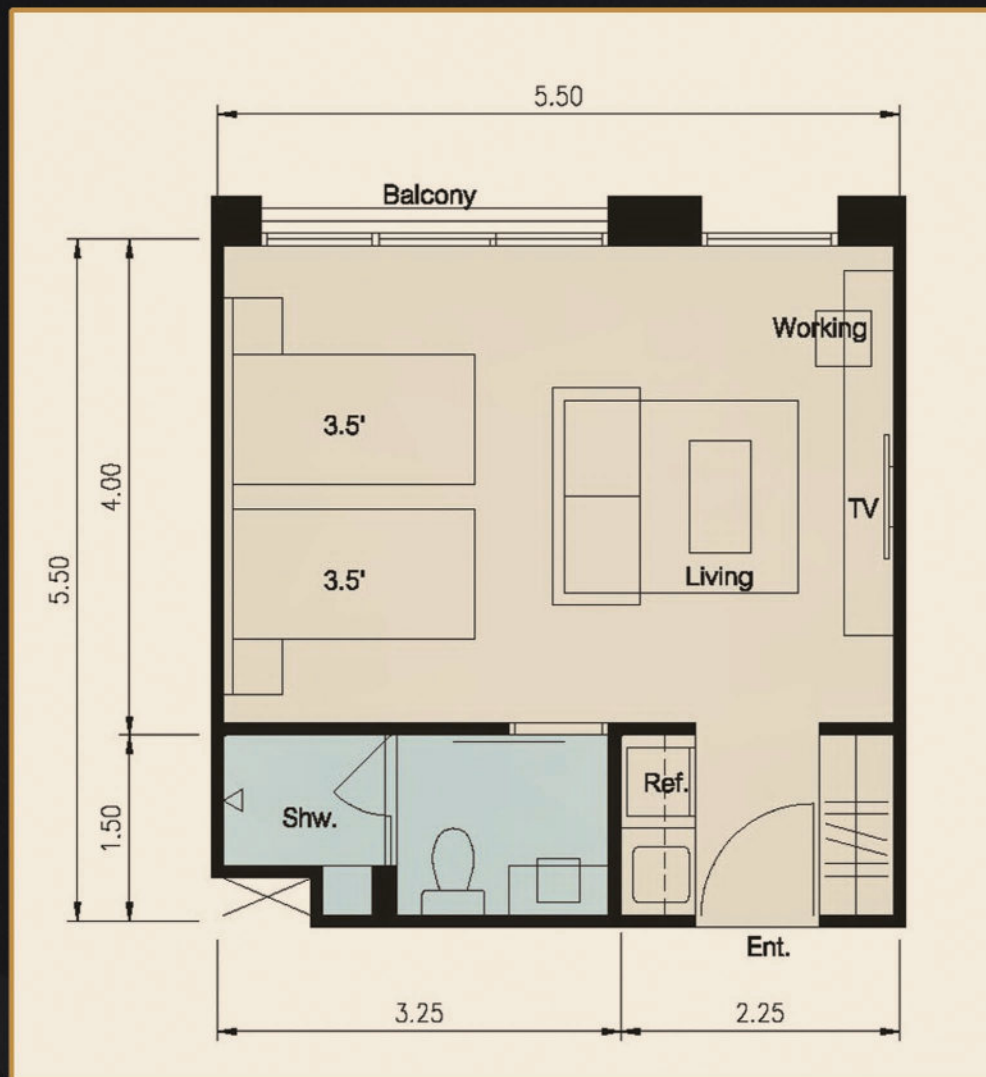
- |   |         |
|---|---------|
| A | 30 SQM. |
| B | 38 SQM. |
| C | 40 SQM. |
| D | 51 SQM. |
| E | 78 SQM. |





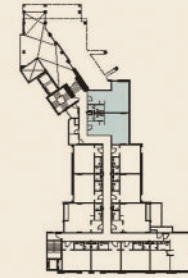
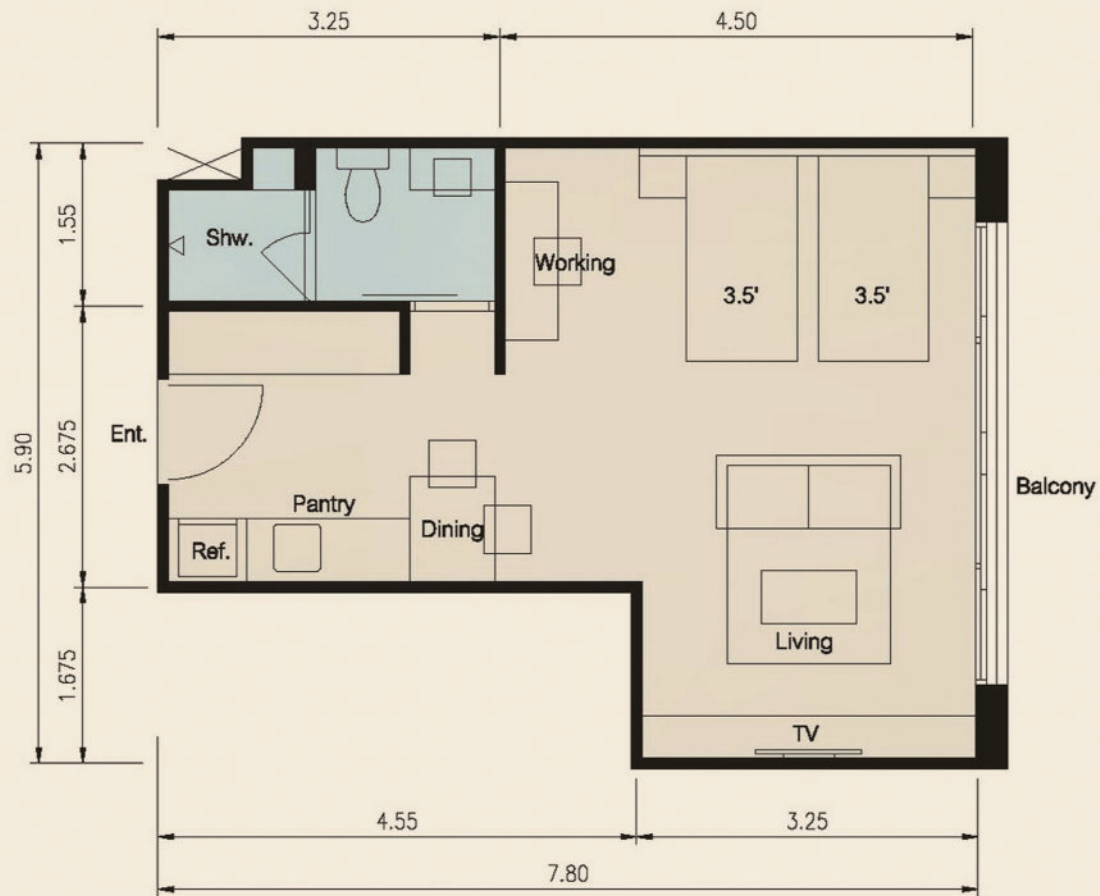
## TYPE A INTERIORS





 LAYOUT TYPE - A 30 SQ.M.





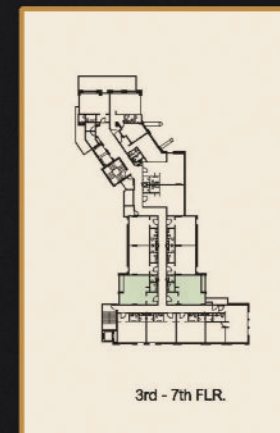
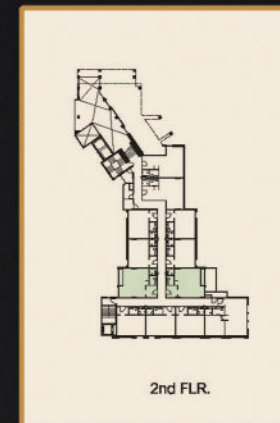
2nd FLR.



3rd - 7th FLR.

 LAYOUT TYPE - B 38 SQ.M.





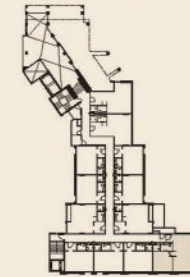
 LAYOUT TYPE - C 40 SQ.M.





## TYPE D INTERIORS





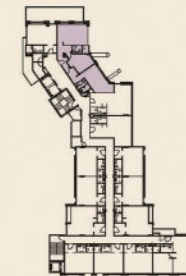
2nd FLR.



3rd - 7th FLR.

 LAYOUT TYPE - D 51 SQ.M.





3rd - 7th FLR.

 LAYOUT TYPE - E 78 SQ.M.



# SPECIFICATION

## STRUCTURAL

- Foundation Reinforced Concrete Piling
- Structure Reinforced Concrete
- Floor to Floor Height 3.1 Meters

## EXTERIOR FINISHES

- Roof Waterproof Coating and shingle roof
- Walls Teca Wall  
Stucco (Cement Rendering) w/ Paint Finish
- Ceilings Gypsum Board (9mm) - Weatherblock
- Floors Balcony: Cotto Tile (40\*30cm) (or equivalent)  
Corridor: Cotto Tile Off-White (60\*60cm)
- Railing Tempered Glass Railing
- Swimming Pool Main Pool: Cotto Porcelain Tile – (4’’\*4’’Inch) (or equivalent)  
1.2 to 1.5 meters / Kids pool 60cm
- Pool Deck Sandwash & Tile (or equivalent)

## M&E / OTHER

- Electrical Supply 3 Phase Low Voltage
- Electric Equipment Panasonic (or equivalent)
- Water Storage Concrete Reservoirs with Pressure Pump
- Water Treatment Septic Tanks
- Pool Filtration Premium Ozone type Water filtration (or equivalent) (Cepex Astra Pool)
- Air-Conditioning Wall Mounted Air-Conditioning Unit (Size dependant on room)
- Fixtures Haffele (or equivalent)
- Lighting LED Lighting Throughout
- Emergency Electric Generator for Lifts, Common Areas, Water Pumps, Internet
- Elevators Kone (or equivalent)

## INTERIOR FINISHES

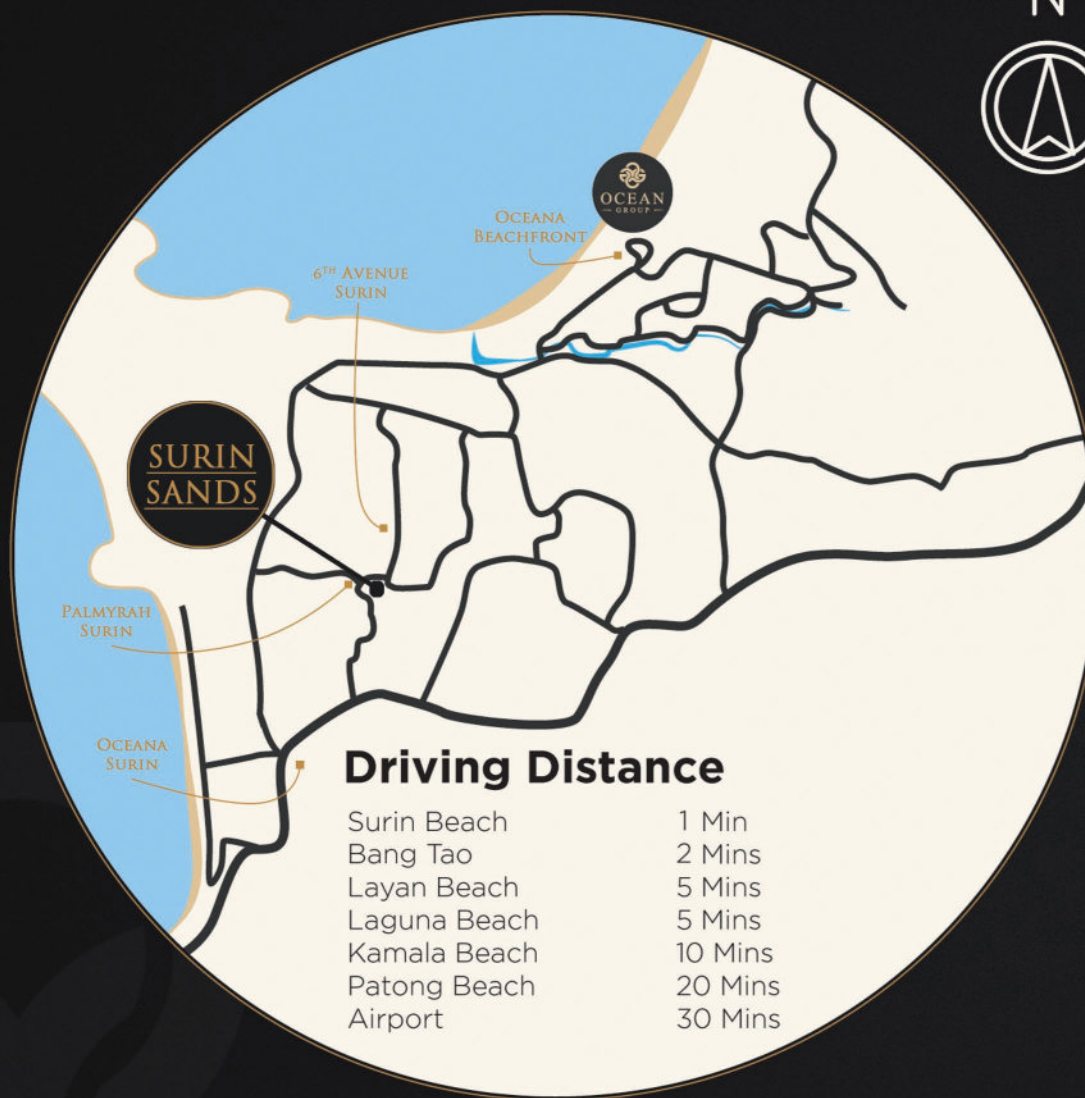
- Walls Living & Bedrooms – Teca Wall with Skim Coat and Paint Finish  
Bathrooms – (30\*60cm) (or equivalent) White Cotto
- Ceilings Gypsum Board (9mm) w/ Paint Finish
- Ceiling Heights Living / Bedroom 2.7 Meters  
Bathroom / Kitchen 2.6 Meters
- Floors Bedroom – (60\*60) King White (or equivalent)  
Bathrooms – Tiles (30\*60cm) (or equivalent)
- Doors Entrance - Hardwood Frame & Door  
Type 2 Bedrooms - Aluminium Glass Door  
Bathroom – Hardwood Frame & Door
- Windows Powder Coated Aluminum w/6mm Glass Panel
- Bathroom Access I-Spa (or equivalent)

## NOTE

Certain changes of materials and finishing might take place during the construction phase of the Project. It is understood that any modified items shall be either equivalent or superior to what has initially been selected.







## LOCATION MAP